

Graystone

STEPHANIE GASPAROVIC & ASSOCIATES
PRESENT GRAYSTONE SUBDIVISION, A
COMMUNITY IN THE TOWN OF HAMPSTEAD.

THE COMMUNITY OF GRAYSTONE OFFERS
LOTS ~0.50 ACRES IN SIZE, PERFECT FOR
ENJOYING SOUTHEAST NORTH CAROLINA'S
GORGEOUS WEATHER.

GRAYSTONE'S DESIRABLE LOCATION
IN A WOODED, SCENIC
ENVIRONMENT IS ONLY MINUTES
FROM THE ICWW AND
CONVENIENT TO HWY 17, WHICH
AFFORDS EASY ACCESS TO
THE CITY OF WILMINGTON, SHOPPING
AND FINE DINING,
BEACHES AND RECREATION, TOP RATED
SCHOOLS AND MORE!

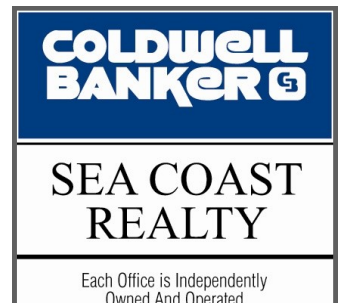
PURCHASE A LOT TODAY FOR YOUR
FUTURE RESIDENCE IN ONE
OF HAMPSTEAD'S MOST BEAUTIFUL
NATURAL HABITATS.



Listed and Marketed by:
Stephanie Gasparovic & Associates
www.TeamGasparovic.com

Contact Graystone's On-Site Agent:
Realtor® Eric Sabourin
Direct: 910.228.1039
Email: Eric@TeamGasparovic.com

1001 Military Cutoff Rd. Ste. 101, Wilmington, NC 28405

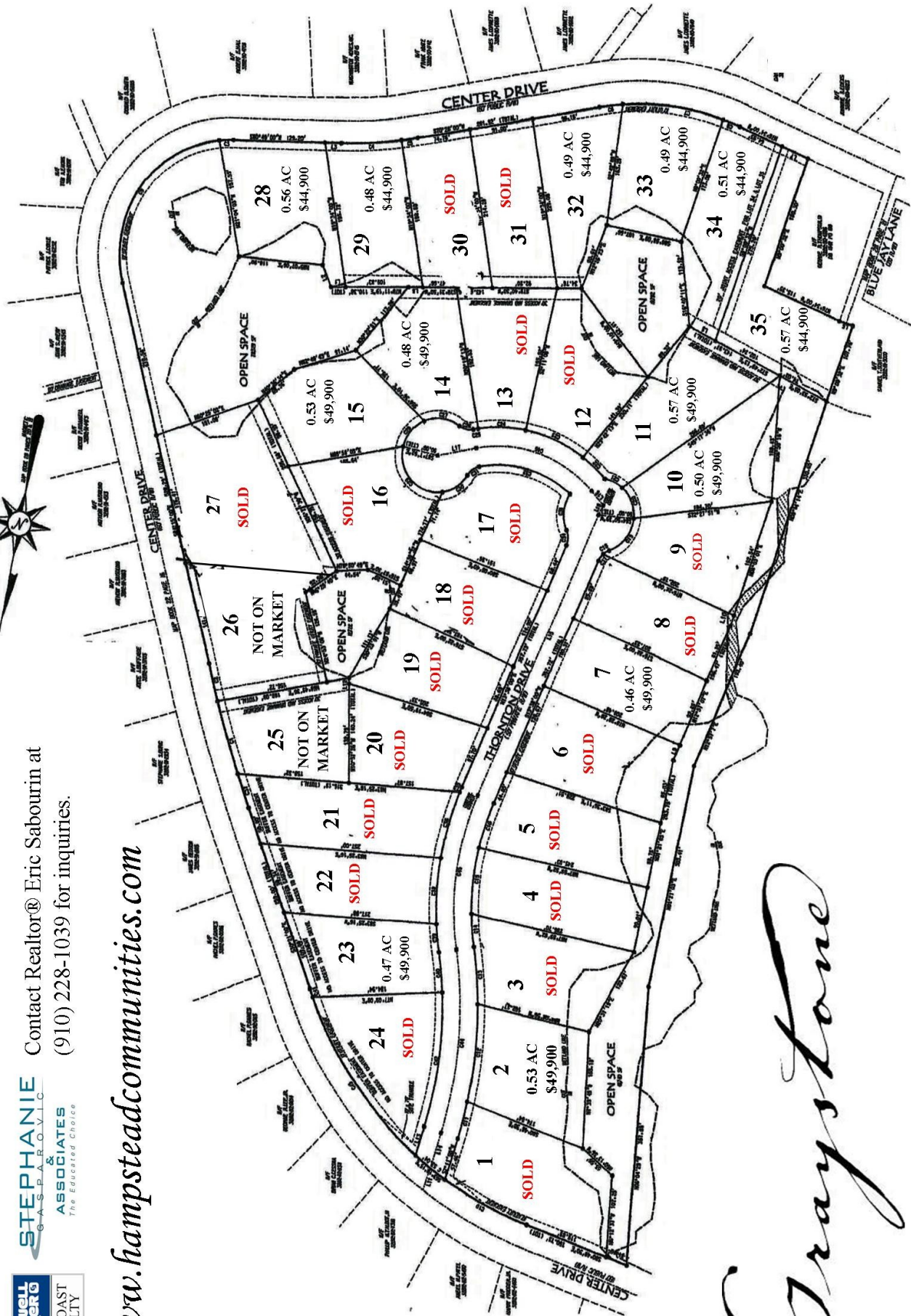




STEPHANIE
GASPARI, D.V.L.C.
&
ASSOCIATES
The Educated Choice

Contact Realtor® Eric Sabourin at
(910) 228-1039 for inquiries.

www.hampsteadcommunities.com



Graystone